

Celebrations • Private Dining • Corporate Event



COSMOS



Tonno
DELUXE



LOYAL
BAR
BAR & DINING



Loyal Bar The perfect place to unwind and wallow



Open bar service, private or corporate bookings is available on request

Exclusive Hire Cocktail reception for up to 50 guests

Private Party PAX: 30-50

Price	Lunch	Before 6pm (3 hours)	\$3,800 (Mon - Sun)
	Dinner	After 6pm (3 hours)	\$9,800 (Mon - Sun)

Contact us

- 📍 G/F, 5 Tonnochy Road, Wan Chai, HK
- ☎ +852 3125 3888
- ✉ info@thetonne.com.hk
- 🌐 www.thetonne.com.hk
- 📱 @loyalbarhk

- Excluding 24th Dec and 31st Dec.
- In regard to maximum capacity of guests, it will be subjected to "Prevention and Control Disease (requirement and directions) Regulation." by government.
- Early bird can enjoy 15% off discount (noon time only)
- Subject to 10% service charge





+10% service charge. All food and beverage will be charged on consumption to the master account.



Kura brings top-quality traditional Japanese cuisine in an authentic, modern setting, the ambience of the place falls short of offering that truly authentic Japanese experience. Stylish vibe of the VIP room is elevated by the work of art from Japanese contemporary art maestros Yayoi Kusama and Takashi Murakami. The Private room is ideal to accommodate 8-10 guests.

Private Party 8-10 guests

Contact us  1/F, 482 Jaffe Road, Causeway Bay
 +852 2754 1386
 info@kura.com.hk
  @kura.hongkong



Loyal Dining Authentic Hong Kong cuisine in Wan Chai



Brings authentic Hong Kong classic dining experience infused with the city's unique history and tradition, while creating the feeling reminiscent of the sweet old days.

Loyal Dining will be the perfect venue for corporate meetings and social gatherings for 20 to 120 persons offering classic Hong Kong cuisine and well-equipped meeting facilities including audio, visual system and projector are available.

Semi-Private Dining Room

For 6-12 guests
Lunch \$2,500
Dinner \$5,000

Exclusive Hire

For 80-120 guests
Lunch \$25,000
Dinner \$28,000

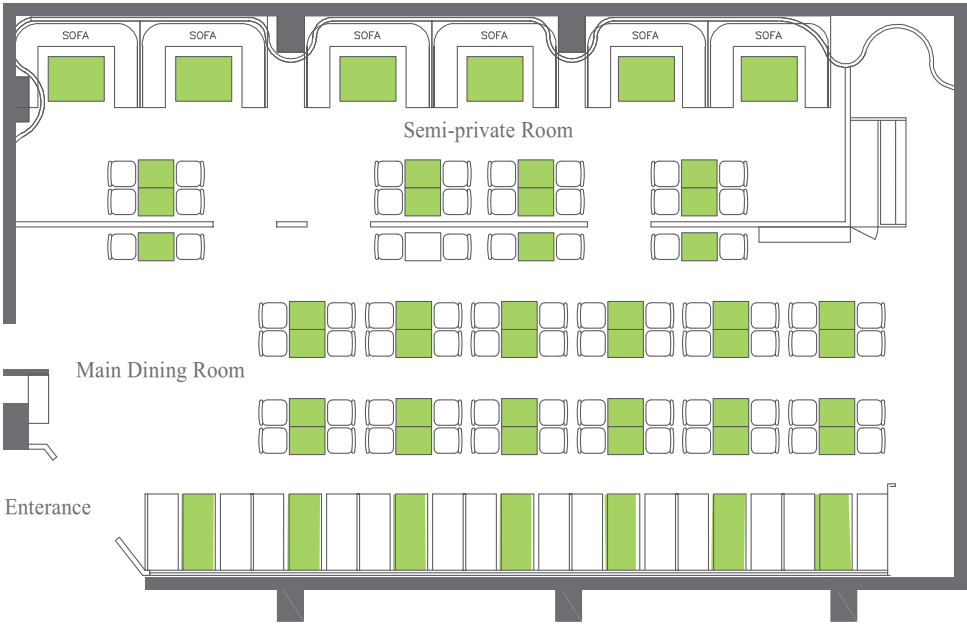
Contact us 📍 1/F, 5 Tonnochy Road, Wan Chai, HK
☎ +852 3125 3000
✉ info@loyaldining.com.hk
🌐 www.loyaldining.com.hk
📱 @loyaldining

- Excluding 24th Dec and 31st Dec.
- In regard to maximum capacity of guests, it will be subjected to "Prevention and Control Disease (requirement and directions) Regulation." by government.
- Subject to 10% service charge



+10% service charge. All food and beverage will be charged on consumption to the master account.

Loyal Dining Floor Plan



■ Table Maximum Seating Capacity : 120 persons

DPD Deluxe



DPD Deluxe is a new international-style restaurant offering both Western and Chinese cuisines, the menu is bound to please all palates. The spacious dining area with floor-to-ceiling windows and marble walls promising a unique setting for events or gathering for 60-90 guests that will impart a lasting impression.

Private Party 60-90 guests

Contact us 📍 Shop 10B-13, G/F, AIA Tower, 183 Electric Road, North Point
☎ +852 2827 8328
✉ info@dphk.com
📱 @dphk.deluxe



+10% service charge. All food and beverage will be charged on consumption to the master account.



Helmed by former Ming Court executive chef and managed by a team of seasoned five-star hotel staff. DPD locates in the heart of Mongkok brings on nostalgic dishes that speak to generations of food-loving Hongkongers. DPD's causal vibes make it an obvious go-to for a fun gathering night for 80 guests. Host groups of friends, family and colleagues for social, sharing-style dinner.

Private Party 80 guests

Contact us 📍 Shop B2-B4, G/F, 244 Portland Street, Mong Kok
 ☎ +852 2827 8638
 ✉ info@dpdhk.com
 📱 @dpd.hk



Tonno Deluxe

Designed with sophistication for parties and events



Party venue with occasional themes for private party, seasonal celebration and corporate events. Party planner is available to customize your party decoration and buffet menu, DJ hiring, photographer arrangement, cake order, party favour and Limousine arrangement. Free usage of microphone, projector, screen and karaoke system.

Exclusive Hire Standing event for up to 120 guests , Seated dinner for up to 60 guests

Private Party PAX: 60 - 120

Price	Mon - Thur	1200 - 1500	\$13,000	1800 - 0400	\$22,000
		1200 - 1800	\$18,000		
	Fri - Sat & PH	1200 - 1500	\$15,000	1800 - 0400	\$38,000
		1200 - 1800	\$25,000		

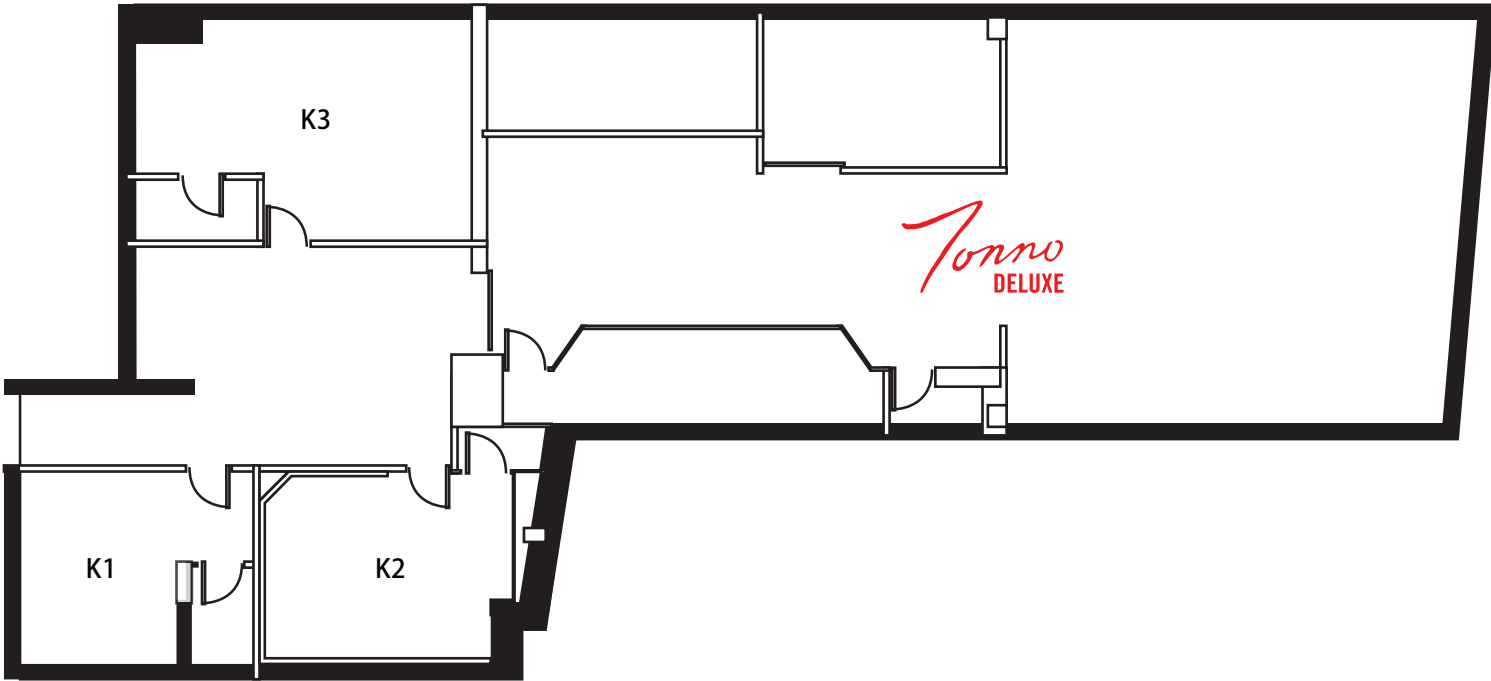
Contact us  1/F, 5 Tonnochy Road, Wan Chai , HK
 +852 3125 3888
 info@thetonna.com.hk
 www.thetonna.com.hk

- Excluding 24th Dec and 31st Dec.
- In regard to maximum capacity of guests, it will be subjected to "Prevention and Control Disease (requirement and directions) Regulation." by government.
- Early bird can enjoy 15% off discount (noon time only).



+10% service charge. All food and beverage will be charged on consumption to the master account.

Tonno Deluxe Floor Plan





RedMR is a stylish party hotspot that provides exceptional party experience with decent environment, quality dining and high technology facilities.

Vision

RedMR would like to redefine what 'karaoke entertainment' means by providing exceptional party experience for customers, bringing everyone unforgettable joyful memory.

Founded

18 December, 2010

Numbers of Outlets

4 Outlets (Wan Chai, Causeway Bay, Tsim Sha Tsui, Mong Kok)





Exclusive Hire Various room sizes from 2 to 60 guests

Private Party PAX: 20-40

Price	Mon - Thu	1200 - 1800	\$4,800	1800 - 0400	\$9,800
	Fri - Sat & PH	1200 - 1800	\$5,800	1800 - 0400	\$12,800

Contact us

- 📍 Wan Chai 2/F, 5 Tonnochy Road, Wanchai, Hong Kong
- Causeway Bay 3/F, 482, Jaffe Road, Causeway Bay, Hong Kong
- Tsim Sha Tsui 1-2/F, 25-31 Carnarvon Road, TST, Hong Kong
- Mong Kok 3-4/F MPM, 11 Nelson Street, Mongkok, Hong Kong
- ☎ +852 3125 3125
- ✉ info@redmr.com
- 🌐 www.redmr.com
- 📱 @redmrhk



- Excluding 24th Dec and 31st Dec.
- In regard to maximum capacity of guests, it will be subjected to "Prevention and Control Disease (requirement and directions) Regulation." by government.
- For RedMR VIP room, price varies according to branches.
- Early bird can enjoy 15% off discount (noon time only)
- Subject to 10% service charge

+10% service charge. All food and beverage will be charged on consumption to the master account.





As a new concept store with a theme “The First Cafe x Private Room in Hong Kong”, COSMOS’ 29 rooms comprises of four different colors served with thematic food and special drinks, and The Space is an open area spacious enough for social gathering and business activities.

The space PAX: 20-40

Price

Before 6pm	(3 hours)	\$3,800
After 6pm	(3 hours)	\$5,800

Contact us

- 📍 2/F, 482 Jaffe Road, Causeway Bay, Hong Kong
- ☎ +862 3125 3113
- ✉ info@cosmosredmr.com
- 🌐 www.cosmosredmr.com
- 📱 @cosmos.hk



- Excluding 24th Dec and 31st Dec.
- In regard to maximum capacity of guests, it will be subjected to “Prevention and Control Disease (requirement and directions) Regulation.” by government.
- Subject to 10% service charge

+10% service charge. All food and beverage will be charged on consumption to the master account.

Please feel free to contact us for event bookings and more information.

King Lee

F&B Operation Supervisor

+852 2378 3112 / kinglee@bma.com.hk

COSMOS



Tonno
DELUXE



LOYAL
BAR
BAR & DINING

